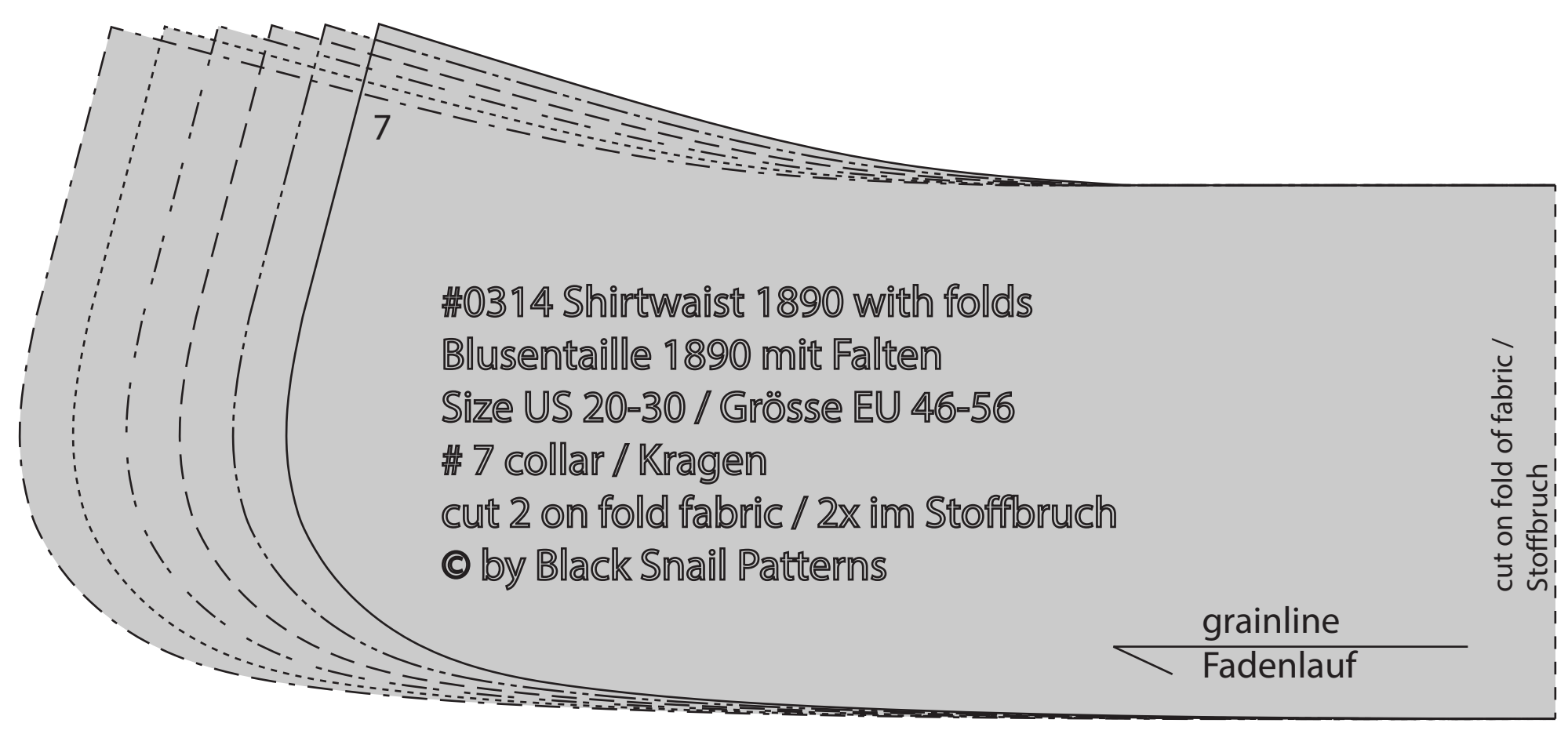
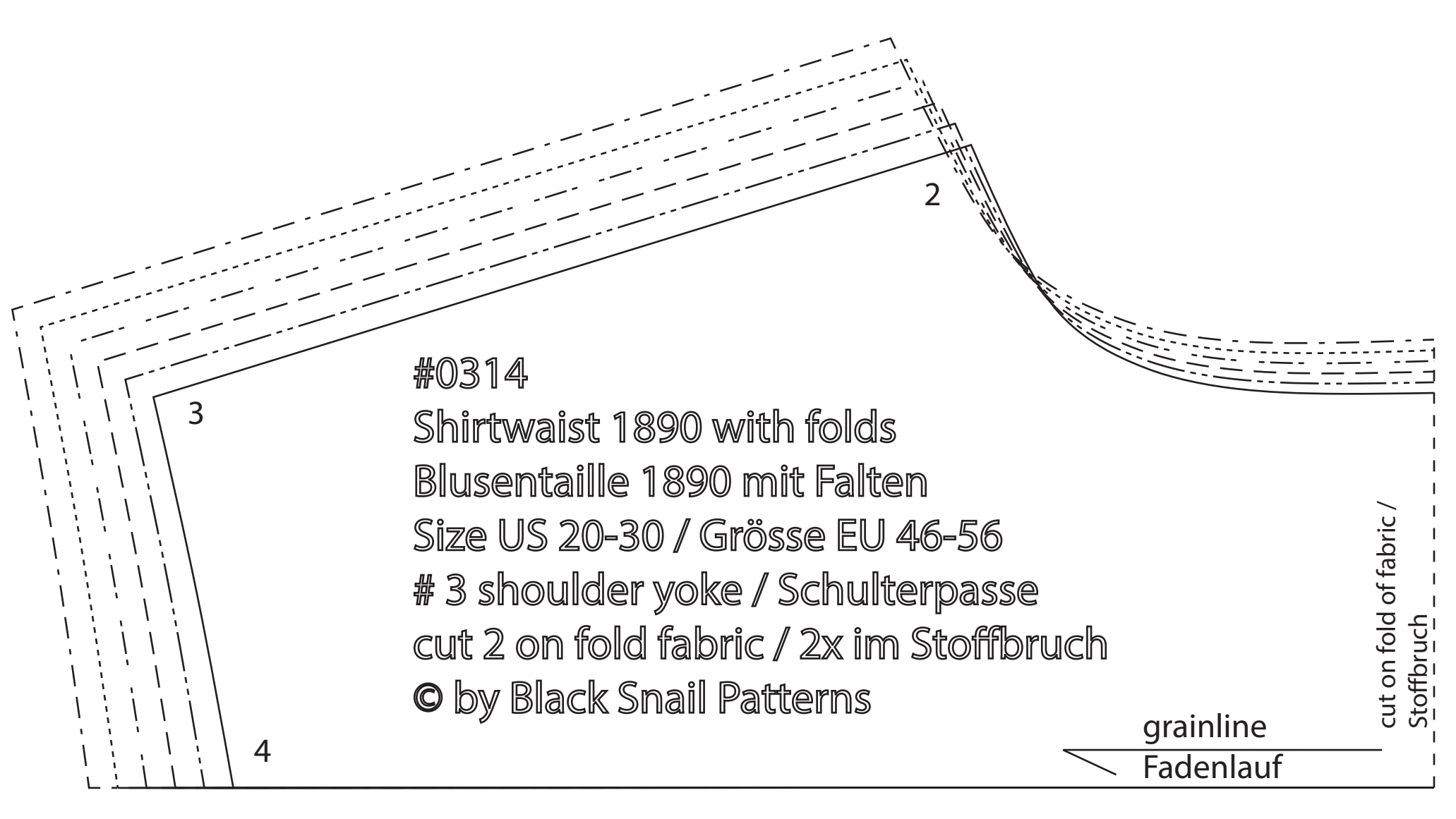


#0314
 Shirtwaist 1890 with folds
 Blusentaille 1890 mit Falten
 Size US 20-3/ Grösse EU 46-56
 # 1 front / Vorderteil
 cut 2 / 2x
 © by Black Snail Patterns

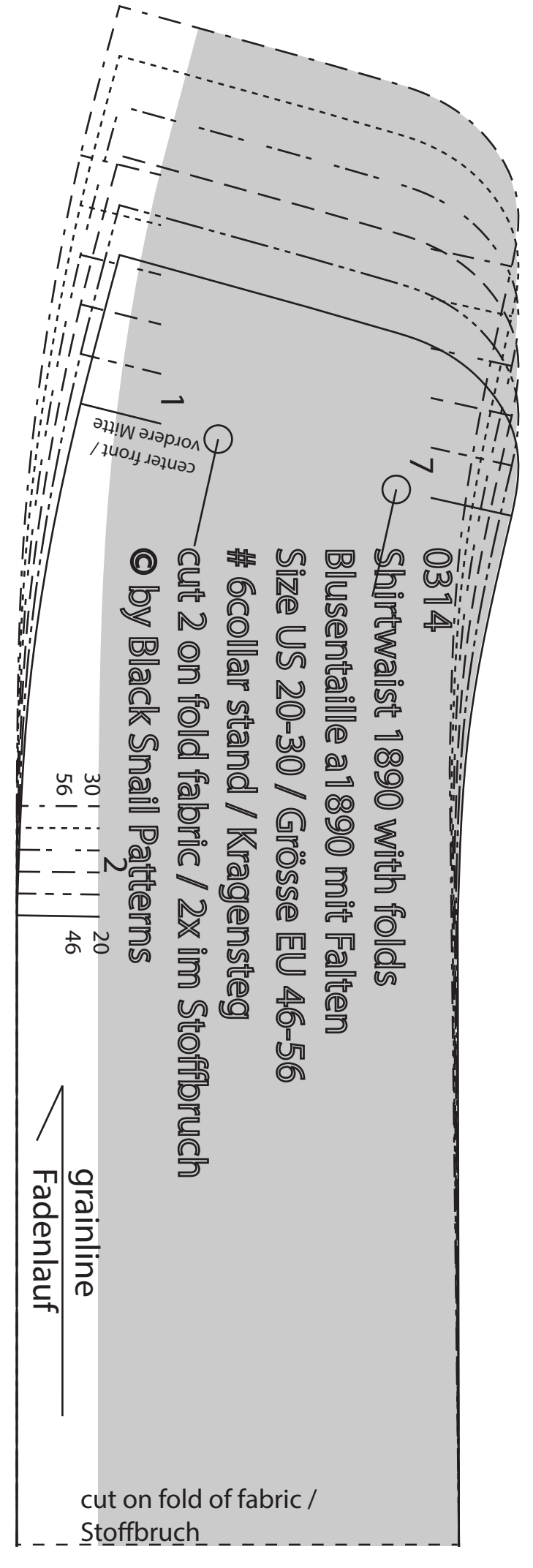
cut here for right button band (printed fabrics), add 5/8" (1.5cm) seam allowance to each edge / hier für die rechte Knopfleiste auseinander schneiden (bedruckte Stoffe), 1.5cm NZ an jeder Kante zugeben



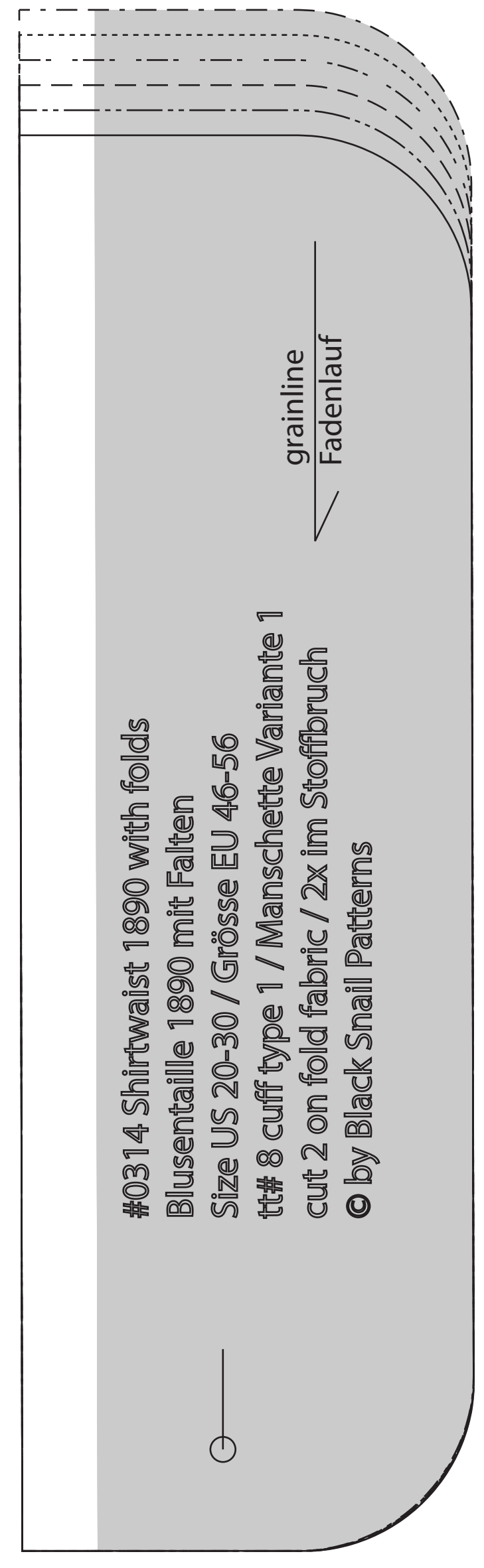
#0314 Shirtwaist 1890 with folds
 Blusentaille 1890 mit Falten
 Size US 20-30 / Grösse EU 46-56
 # 7 collar / Kragen
 cut 2 on fold fabric / 2x im Stoffbruch
 © by Black Snail Patterns



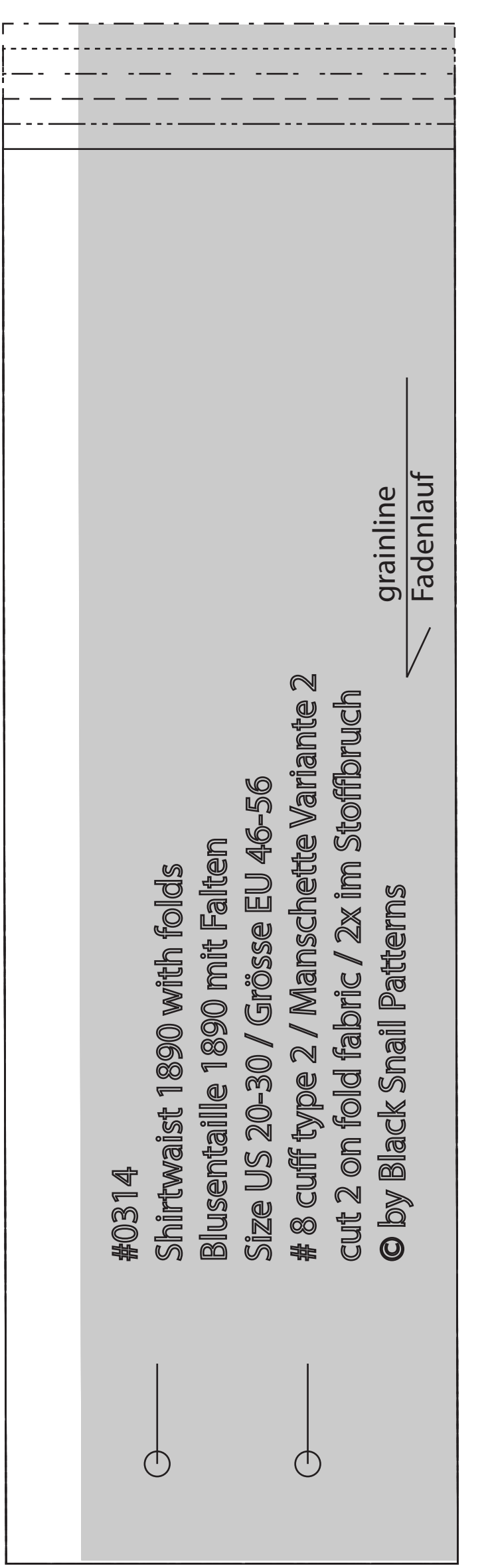
#0314
 Shirtwaist 1890 with folds
 Blusentaille 1890 mit Falten
 Size US 20-30 / Grösse EU 46-56
 # 3 shoulder yoke / Schulterpasse
 cut 2 on fold fabric / 2x im Stoffbruch
 © by Black Snail Patterns



#0314
 Shirtwaist 1890 with folds
 Blusentaille 1890 mit Falten
 Size US 20-30 / Grösse EU 46-56
 # 8 collar stand / Kragenstein
 cut 2 on fold fabric / 2x im Stoffbruch
 © by Black Snail Patterns



#0314 Shirtwaist 1890 with folds
 Blusentaille 1890 mit Falten
 Size US 20-30 / Grösse EU 46-56
 # 8 cuff type 1 / Manschette Variante 1
 cut 2 on fold fabric / 2x im Stoffbruch
 © by Black Snail Patterns



#0314
 Shirtwaist 1890 with folds
 Blusentaille 1890 mit Falten
 Size US 20-30 / Grösse EU 46-56
 # 8 cuff type 2 / Manschette Variante 2
 cut 2 on fold fabric / 2x im Stoffbruch
 © by Black Snail Patterns

